

RAYMAN 2

THE GREAT ESCAPE



ESRB Rating: E (Everyone)



WARNING: PLEASE CAREFULLY READ THE CONSUMER INFORMATION AND PRECAUTIONS BOOKLET INCLUDED WITH THIS PRODUCT BEFORE USING YOUR NINTENDO® HARDWARE SYSTEM, GAME PAK OR ACCESSORY. THIS BOOKLET CONTAINS IMPORTANT SAFETY INFORMATION.

THE OFFICIAL SEAL IS YOUR ASSURANCE THAT NINTENDO HAS APPROVED THE QUALITY OF THIS PRODUCT. ALWAYS LOOK FOR THIS SEAL WHEN BUYING GAMES AND ACCESSORIES TO ENSURE COMPLETE COMPATIBILITY. ALL NINTENDO PRODUCTS ARE LICENSED BY SALE FOR USE ONLY WITH OTHER AUTHORIZED PRODUCTS BEARING THE OFFICIAL NINTENDO SEAL OF QUALITY.



THIS PRODUCT HAS BEEN RATED BY THE ENTERTAINMENT SOFTWARE RATING BOARD. FOR INFORMATION ABOUT THE ESRB RATING, OR TO COMMENT ABOUT THE APPROPRIATENESS OF THE RATING, PLEASE CONTACT THE ESRB AT 1-800-771-3772.



LICENSED BY



NINTENDO, THE OFFICIAL SEAL, NINTENDO 64 AND THE "N" LOGO ARE TRADEMARKS OF NINTENDO OF AMERICA INC. ©1996, 1999 NINTENDO OF AMERICA INC.

CONTENTS

Controller2-3
The Story5
Starting The Game6-7
Loading/Saving Games8
Game Screen9
Controlling Rayman10-12
Powers13
Rayman's Friends14-15
Rayman's Enemies16
Objects17
Magic Objects18-19
Credits20-22



CONTROL STICK FUNCTION

The Nintendo® 64 Controller contains a Control Stick which uses an analog system to read the angles and direction of its movement. This allows subtle control that is not possible using the conventional + Control Pad.

When turning the Control Deck power ON, do not move the Control Stick from it's neutral position on the controller.



If the Control Stick is held at an angled position (as shown in the picture on the left) when the power is turned ON, this position will be set as neutral. This will cause games using the Control Stick to operate incorrectly.

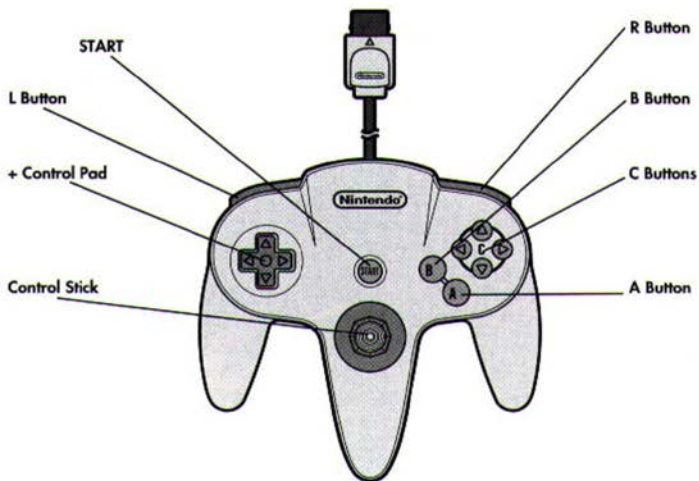


To reset the neutral position once the game has started, let go of the Control Stick so it can return to its center position (as shown in the picture on the left) then press START while holding the L and R Buttons.

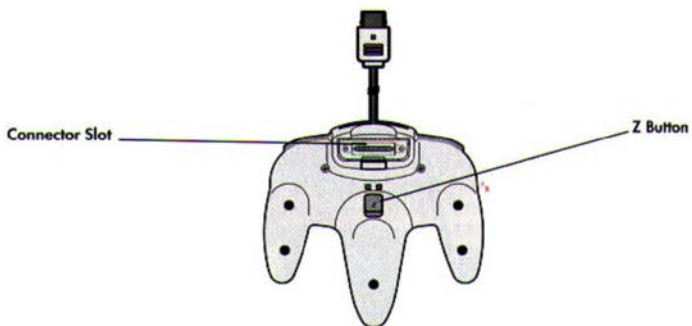
The Control Stick is a precision instrument, make sure not to spill liquids or place any foreign objects into it.



N64® Controller



Back of Controller





Panic in the Chamber of the Teensies and the Fairy Council: Robo-Pirates from deep in space have arrived, determined to conquer and enslave their entire world. The time for combat has come. Volunteers form small resistance groups and throw themselves into battle with the evil aggressors. Rayman® and his friend Globox go to the edge of The Great Forest, where the highest number of pirates are located.

Rayman jumps from a tree and activates his helicopter for a soft landing in the middle of a thicket of bushes. "The Pirates are coming straight at us!", cries Rayman to his friend. "Get ready!" The earth suddenly begins to tremble... Several trees collapse, creating a passageway for an army of robots. The Battle begins! Rayman leaps into action, sending metal monsters flying with his powerful energy spheres. A little later, Globox, trembling with fright, desperately tries to make the robots rust up by creating little rain storms over their heads. A robot, creaking horribly, crashes to the ground. "Not bad, Globox!" shouts Rayman with a smile. Globox tries to answer, but Rayman doesn't hear: The strained face of Ly has just appeared in his mind. "Rayman...", begins Ly, in a weary voice, "The pirates have broken the heart of the world. The energy has scattered. Other than Clark, all of our brave warriors have been captured..."

Shocked by this terrible news, Rayman lets himself be surprised by a gigantic robot who pins him between its powerful pinchers. He tries to create a new energy sphere in the palm of his hand, but to no avail. The destruction of the Primordial Core has taken away all of his powers... Desperate, he shouts to his friend... "They've got me, Globox! Save Yourself!" "But...but...what about you?!" "No time to explain! Go find Ly, she'll tell you what to do!" After a moment of hesitation, Globox dodges between the feet of the robots, and plunges into the high grass.

An evil laugh reverberates. Rayman turns and sees Razorbeard, the leader of the Pirates. "I have you, Rayman! You'll soon be my most obedient slave...!" Rayman tries to free himself, but the iron grip of the robot tightens around him. He casts a dark look at Razorbeard and shouts defiantly: "It's not over yet, pirate! I'll find a way to escape and then I'll make you wish you'd never been born!"



STARTING THE GAME

Carefully and correctly insert the RAYMAN® 2 Game Pak™ into your Nintendo® 64 Control Deck and turn on the Control Deck by putting the Power Switch to the ON position.

Once the title screen appears, Press START to access the Language Selection Menu.

> Navigating the Menus

To navigate the menus in RAYMAN 2, use the Control Stick. Your previously selected choice will be outlined in red. If you wish to choose another, it will be outlined in yellow. To confirm your selection, press the A Button. To go back, press the B button .



> Select the Language

Select the language you want with the Control Stick and finalize your choice by pressing the A Button . At any point in the game you can change to another language by selecting "Language" in the Options Menu.

> Main Menu

Select "New Game" to begin a new game.

If a Nintendo 64 Controller Pak™ is properly installed in the correct slot, it will offer you the choice of a saving location.

Select "Options" to access the Options Menu.



> Options Menu

To access the Options Menu while playing the game, press START and then select "Options". In this menu, you can adjust certain parameters to insure optimal enjoyment of the game.



• Video Settings



Select "Resolution" to adjust it. If you have an Expansion Pak™ correctly inserted into your console, the game will automatically go into High Resolution mode.

If you do not have an Expansion Pak, you can not go into High Resolution mode.

Select "Contrast" to adjust the contrast of the display.

When the game is in High Resolution mode, contrast is automatically adjusted to it's maximum setting.

Select "Center Screen" to correct any placement problems with the display as it appears on your television.

• Sound Settings

Select "Sound" to adapt the type of sound to your television. Select "Music" and use the Control Stick. To increase or decrease the sound level of the music. Select "Effects" and use the Control Stick to increase or decrease the volume of the sound effects.



Expansion Pak

RAYMAN 2 is fully compatible with the Expansion Pak for Nintendo 64. Insert the Expansion Pak into the corresponding slot, and the game will automatically move into a higher resolution which will allow you to see all the amazing graphics. (For all questions, please refer to instruction manual contained in your Nintendo 64 Expansion Pak kit.)



LOADING SAVING GAMES

It is only possible to load a saved game if a Nintendo 64 Controller Pak is correctly inserted into the Controller before the Power Button is put to the "ON" position.

> Loading

It is possible to load a saved game at any moment from the game menu. To access the game menu, press START at any point during the game. Select "Load" to load a saved game.



> The Hall of Doors & Saving

In order to save a game, it is necessary that Rayman be in the Hall of Doors. This magic place, built long ago by the Teensies, allows access to new worlds. But remember; Rayman can only get to it after traveling through an entire world.



To move from a world to another when you are in the Hall of Doors, use the Control Stick. To enter into a world, jump through by pressing the A Button.

If you choose "yes", your game will automatically be saved to the location you chose at the beginning of the game. To change this location, press START and select "save".

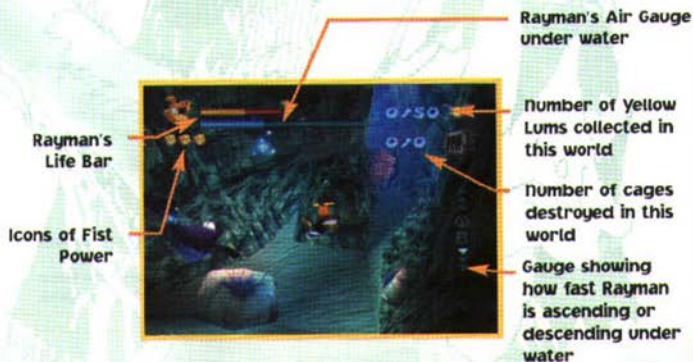


To delete a saved game in order to free up a slot, select "Delete" in the menu. You will be asked to confirm your decision before the game is actually deleted.



GAME SCREEN

Throughout his adventures, Rayman should break open the cages which imprison his friends. This allows him to get the Fists of Force that will make his shots more powerful, and to collect the precious energy spheres called "Lums". Above all, he must find the four magic masks which will allow him to wake Polochus, the spirit of the world.



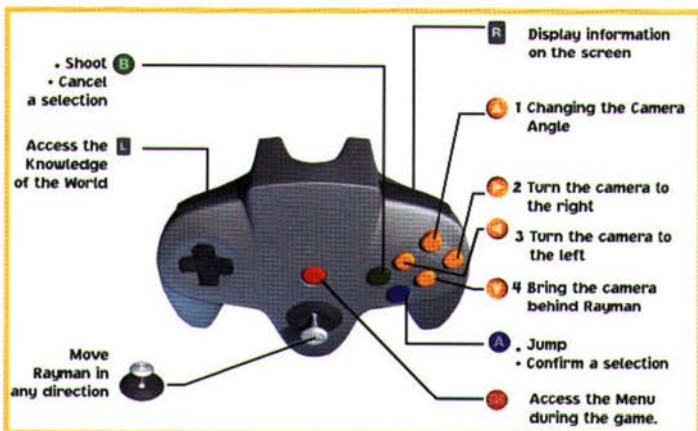
While playing, at any time you can press the R Button to display Rayman's life bar as well as the number of Yellow Lums collected and the number of cages destroyed.



At any time you can press START to get a complete recap of the elements collected since the beginning of the game.



CONTROLLING RAYMAN



> Options Camera

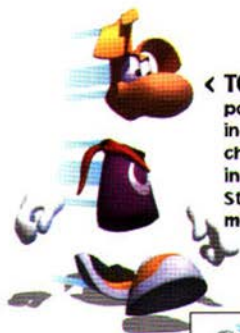
To get your bearings and find your way around, making good use of the camera is crucial. Practice moving the camera and changing its angles with the help of the various C Buttons.

C and **C** : provide a panoramic view moving to the left or to the right around Rayman.

C : Puts the camera back to Rayman's point of view. You can explore his field of vision using the Control Stick. Just release the button to return to your previous camera placement.

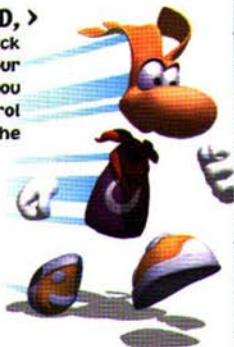
C : Puts the camera behind Rayman.





< TO MOVE AROUND, >

point the Control Stick in the direction of your choice. The more you incline the Control Stick, the faster he moves.



< TO JUMP, >
press the A Button.

TO MOVE SIDeways, >

use the Control Stick while pressing the Z Button. This is very helpful for keeping your enemies in sight and avoiding their fire.



< TO SWIM, point the Control Stick in the direction of your choice. To dive, press the Z Button and to return to the surface, press the A Button .

Attention: Special care has been taken to give Rayman total freedom of movement while he's swimming. Take some time and practice using the controls, as this skill will come in very handy!



- ▶ **TO ACTIVATE HIS HELICOPTER**, press the A Button whenever Rayman is not touching the ground, such as in the middle of a jump or during a fall. To stop the Helicopter; press the A Button once again. The Helicopter is helpful for landing with precision, in the middle of a jump or during a fall.

Remember; the Helicopter can only be activated when Rayman is in the air already. A little advice: use Rayman's shadow to help with a steady landing.



- ◀ **TO GRAB** onto the edge of most walls. Jump, and point the Control Stick in the direction of the wall. Rayman will grab onto it automatically.



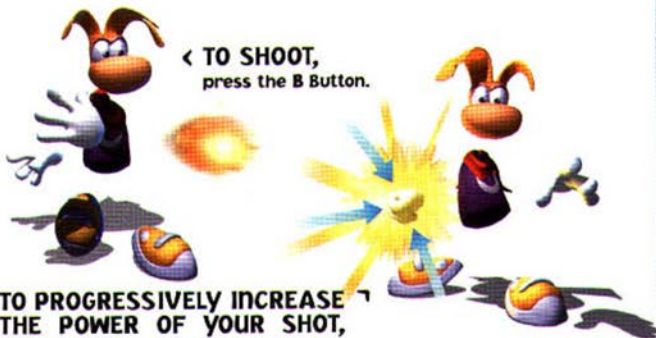
- TO CLIMB** along nets, walls covered in plant life, and spider webs, jump while pointing the Control Stick in the direction of the wall. Rayman will grab onto it automatically. You can then move around using the Control Stick. To get off, jump by pushing the A Button.



- ◀ **TO CLIMB UP BETWEEN TWO WALLS**, jump by pressing the A Button and press the A Button again to grab the wall. Repeat these two maneuvers until you reach the top.

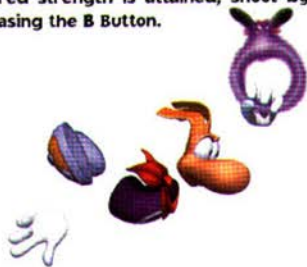
POWERS

Throughout his adventures, Rayman will receive new powers which give him some amazing abilities!



< TO SHOOT,
press the B Button.

TO PROGRESSIVELY INCREASE THE POWER OF YOUR SHOT, leave the B Button pressed down. The energy ball in Rayman's hand will become bigger and bigger. When the desired strength is attained, shoot by releasing the B Button.



< TO GRAB ONTO PURPLE LUMS, shoot them. Once you've grabbed on, you can swing in the direction of your choice by using the Control Stick. To get off, press the B Button.

TO FLY IN HELICOPTER MODE, activate the helicopter (see page 12) and leave the A Button pressed down. Not only can the helicopter be used to land you safely, but flying in helicopter mode gives you total freedom to fly in any direction! To stop flying in Helicopter mode, press the A Button once more. Little advice: your trajectory can be stabilized by pressing the Z Button. This will help you to avoid obstacles.



RAYMAN'S FRIENDS

The inhabitants of Rayman's world fall in to two catagories: Magical Beings, gifted with fantastic powers, and the People....

> The Magical Beings



✧ POLOCHUS

He is the spirit of the world, the creator of all that is and will be... His power is such that his dreams can become reality... Long, long ago he went away from this world, and only by reuniting the four magical masks (see page 18) can he be brought back...

✧ LY

Ly is a fairy, and like all fairies, she possesses great powers. Unfortunately, the explosion of the Primordial Core by the pirates has weakened her.

When she has reunited enough energy, she can create Silver Lums, which give amazing new powers to Rayman.



✧ THE TEENSIES

Ancient and wise people who long ago built the Hall of Doors (see page 8), that magical place where access is given to all the regions of the world. Very old and a little absent minded, they have forgotten which of them is their King, and spend much of their time performing acrobatic dance moves to make the youngest green with envy.

> The People

✧ GLOBOX

Adorable, if a little simple, Gobox is Rayman's best friend. He has the power to create forceful little rain storms which can used to put out fires or make plants grow.

With the aid of his mate Uglette, he has produced a prodigious family: more than 650 children at last count!



★ CLARK

A mountain of muscles, Clark is an army all by himself. With one mighty blow, he can send an entire regiment of pirates flying. His only weak point: a somewhat sensitive stomach. This can cause problems, especially when in the heat of battle, he munches a robot that's a little too rusty...



★ MURPHY



Nicknamed "The Flying Encyclopedia", Murphy helps Rayman by giving him loads of hints and advice. For a short reminder of Murphy's main explanations, move Rayman next to one of the many Stones of Thought scattered around throughout the world (see page 18). If you would rather have Murphy come in-person to give you his detailed explanations, stop by a Stone of Thought and keep the B Button pressed.

★ CARMEN THE WHALE

A magnificent marine creature, who's job it is to survey the depths of the ocean and deposit the air bubbles which can be the difference between life and death for stray plants and animals. She is sometimes pursued by piranhas with heartburn, who are quite fond of her air bubbles...



★ SSSSAM

This young and spirited serpent is the ferryman for the Marshes of Awakening. He helps the inhabitants waterski across the swamps...



RAYMAN'S ENEMIES



☠ Admiral Razorbeard

The pirate leader, he is famous throughout the galaxy for reducing over one hundred peaceful planets to cosmic dust. Don't be fooled by his pathetic and silly appearance, his ferocity is unmatched.

His dream? Overrun Rayman's world and reduce all it's inhabitants to slavery...

☠ The Henchmen

These are the pirate's robot invasion force. Totally devoted to Admiral Razorbeard, they enforce a reign of terror by capturing anyone unlucky enough to cross their paths. There exist several different models, each with it's strong and weak points. It'll be up to you to figure them out...



☠ The Guardian of the Cave of Bad Dreams

A terrifying monster who's job it is to guard the subterranean cave, where the creatures stemming from nightmares of Polochus are locked away. No one has dared to venture within the Cave of Bad Dreams, even though it's rumored to contain an even more precious treasure...

☠ The Zombie Chickens

We can no longer even keep track of all the sinister results provoked by the arrival of the pirates: disturbances in overall harmony, the proliferation of piranhas, giant spiders and caterpillars, etc...

Terrified by all these events, the hens began laying dead eggs, out of which burst the horrible Zombie Chickens...



OBJECTS



> Cages

The pirates have imprisoned many inhabitants in these little cages sealed with vital energy. Breaking 10 cages increases Rayman's Life Bar:

> Kegs

Filled with gunpowder; they explode at the smallest shock. The more advanced models can even fly...



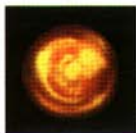
> Shells

Built by the pirates, these are mule headed missiles which can only be subdued by extreme patience. Most have legs, some can fly.



> Plums

This strange fruit has several purposes. You can throw these at your enemies, climb onto them and move around by shooting in the opposite direction, and even float through lava fields on them...



> Magic Spheres

Found on pedestals of the same color; Magic Spheres open the doors to mysterious temples...

> The Blockades

Mediocre at best architecturally, the pirates are obliged to reinforce their constructions with blockades. The blockades are very fragile but the metal ones will only yield to an explosive.



> Switches

The Pirates have cluttered the environment with switches which activate strange machines and open various doors. To make it work, just shoot at it.



MAGIC OBJECTS

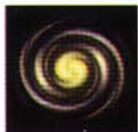
> The Stones of Thought



The Stones of Thought provide a telepathic link to Murphy. Whenever Rayman needs a little help or advice, he should approach one of the Stones, and Murphy will appear in his mind.

> Magic Doors

Present at the beginning and the end of a world, they take you to the Hall of Doors (see page 8) if you go through them.



> The Power Fist



Having the Power Fist makes Rayman's shots more powerful. Attention: if Rayman dies or gets hit, he loses part of the energy in his Power Fist. After three such losses, his shots go back to normal power.

> The Four Masks

These magic masks were hidden inside secret and mysterious sanctuaries. The ancient legends say that whoever can reunite the four can awaken mighty Polochus....



Keep an eye out, as there are many secret doors and passageways that lead to unknown worlds where you can find fabulous treasures and perhaps become more powerful...

> The Lums

Lums are very powerful bursts of energy. Each color has its own special powers...



• Yellow Lums

These are the 1000 energy bursts broken from the Primordial Core when the pirates exploded it. When Rayman has collected enough of them, he'll be able to negotiate his entry into new worlds.

In addition, they contain precious knowledge. The more Rayman can gather, the more he knows of the secrets of the world. At any moment in the game, just press the L Button to read new information provided by the Yellow Lums.

• Super Yellow Lums

Ancient Lums are recognizable by their larger size and big smiles. They are five times more powerful than normal Yellow Lums.



• Red Lums

Packed with vital energy, they restore Rayman's Life Bar:

• Purple Lums

By shooting them, Rayman can grab onto them and swing from one to another, thereby crossing vast areas without touching the ground.



• Blue Lums

Oxygen rich, they restore Rayman's Air Gauge when he's moving under water.

• Green Lumz

These lums are very special. They record Rayman's progress. If he should die, he will appear at the place where he last took a Green Lums.



• Silver Lums

The Silver Lums are fashioned by Fairies. They give new and amazing powers to Rayman...



CREDITS

ORIGINAL CONCEPT

Ancel Michel
Houde Frederic

PRODUCER

Jacquy Pauline

ARTISTIC DIRECTOR

Ancel Michel

GRAPHICS

Alessandri Jean-Christophe
Sacre Florent
Teltier Céline
Tumelaire Paul

** With*

Bicorne Sébastien
Bourges Christophe
Carre Nicolas
Charpentier Florence
Daire Nicolas
Gatto Alexandre
Holbe Fabrice
Kotelnikoff Arnaud
Laporterie Pierre-Henry
Lecterc Yann
Pic Christophe
Zinetti Stéphane

** And*

Capdeferro Denis
De Crecy Geoffroy
Garcia David
Jouette Yann
Junquas Youri
Lefebvre Frederic
Vibert Michel
Ville Emmanuel
Wierzbicki Agata

GRAPHIC RESEARCH

Ancel Alexandra
Chevillard Hubert

ENGINE PROGRAMMING

Létenrorer Yann
Didot Olivier

** With*

Balint Frederic
Beaudet Christophe
Billaud Xavier
Bole-Feynot Fabien
Compagnon Frederic
De Ruyter Michael
Drouaud Jean-Marc
Germain Benoit
Graud Christophe
Le Guyader Yann

Lhullier Vincent
Mc Calla Steve
Pokidine Helene
Oueinac François
Robin Alain
Saillant Olivier
Souchet Guillaume
Thenoz Jacques
Torres Carlos
Trabucato Marc
Vaissé Alexis
Villemain Marc

** And*

Botrel Anthony
Fascia Marc
Perez Fabrice
Quere Thierry

GAME DESIGN

Ancel Michel
Guyot Jean-Christophe
Hascoet Serge
Houde Frederic
Janod Michael
Thibaut Christophe

** With*

Bicorne Sébastien
Diaz Olivier
Gaveau Frederic
Guyon Arnaud
Hilbold Stéphane
Holbe Fabrice
Lecterc Yann
Mikisavljevic Zoran
Monnier Vincent
Palmieri Olivier
Palvadeau Gregory
Petit Jean-Christophe
Pic Christophe
Plagnol Xavier
Soteil Olivier
Thibaut Dorian
Zappavigna Jean
Zinetti Stéphane

ANIMATION

Exertier Jacques

** With*

Bodard Patrick
Regnault Jean-Yves
Vindolet Philippe

** And*

Baduel Alexandre
Cote François
Nasrallah Joseph

** And*

Arsenault Philippe
Branz Erik
Brassard Sébastien
Dickie Jennifer
Dion Christian
Duclos Jean-Sébastien

Helman Jamie
Holloway Phil
Laperrière François
Leblanc Sean
Linington Michael
Prada Carla
Treitz Allan
Zingarelli Mike

CINEMATICS

Exertier Jacques

** With*

- **STORYBOARD**
Bodard Patrick
Bonafous Olivier

- **ANIMATION**
Barranco Damien
Bodard Patrick
Regnault Jean-Yves
Vindolet Philippe

- INTEGRATION

Soteil Olivier

** With*

Chereau Nicolas
Dezautez Sébastien
Momcilovic Michel

INFODESIGN

Guyon Arnaud
Houde Frederic

** With*

- **MAIN CHARACTER**
Le Tensorer Yann
Germain Benoit

- **OTHER CHARACTERS**
Dauba Olivier
Dezautez Sébastien
Diaz Olivier
Guyot Jean-Christophe
Janod Michael
Masson Yann
Soteil Olivier

** And*

Barthou Cedric
Fournaison Matthieu
Laurens Philippe

SCENARIO & DIALOGS

Neiss David

- **BASED ON A STORY BY**
Ancel Michel

- **AMERICAN ADAPTATION**
Gassman David

SOUND DESIGN

His Romain

** With*

Bonafy Olivier
Combes Lambert

Spitmann Gregoire

MUSIC BY

Chevalier Eric

N64 MIDI ADAPTATION

Masson Daniel

SOUND EFFECTS

Talk Over

SOUND ENGINEERING

Dutasta Martin

** With*

Bouhnik Lionel

DATA MANAGEMENT

Mendroux Guenaele

** With*

Andriamanpandry Nary-Tiana

Sbai Hanane

TEST

BEAUDET VANICK

** With*

Bouchard Natasha

Chenier Alain

Cyr Stephane

Gagnier Jonathan

Gosselin Etienne

Leary Stephan

Moreau Jonathan

Ragault David

Richard Michael

** And*

Bissonnette Erick

Blattmann Frederic

Bourbonniere Guillaume

Cloutier Alfred

Cote Jean-Philippe

D' Anjou Jonathan

Francoeur Raphael

Fortin Frederic

Gauthier François

Graveline Simon

Grosselin William

Guerra Eric

Labrecque Jean-Sebastien

Laporte Frederic

Laverdiere Christian

Lavin Christian

Dion Philippe

Lirochon Nicholas

Martel Jean-François

Moutte Julien

Nazar Mike

Pellemans Pierre-Olivier

Pepin Jonathan

Pilon Jerome

Pligersdorffer Stéphane

Rudolphe Sylvain

Ruel Felix

Savard Pierre-Yves

Tardif Martin

Tassy Beranger

Tuazon Roy

TOOLS

Oury Chantal

Lefebvre Bernard

** With*

Babuc Cornelui

Dunka Mircea

Grozea Ionut

Petrescu Cristi

Suparatu Nicolae

Tanku Mihaela

** And*

Baltatanu George

Dragan Dan

Dumitrescu Catalin

Gregoire Joel

Martinaud Christophe

Rizea Cristi

Ruiz Pascal

Touillaud Philippe

** And*

Andriamanpandry Nary

Parent Estelle

Sahla Malika

Servetaz Frank

Veaudour Mickaël

3D PLUG-INS

Raviart Daniel

3D RESEARCH

Vimont Philippe

MARKETING

Buisson Laurence

** With*

Verny Axelle

ARTWORK DESIGN

Ludi Factory

Julie Rault Le Liard

Amandine Offray

Special Thanks to

Xavier Plagnal

David Neiss

Arnaud Kotelnikoff

Christophe Bourges

WW STUDIOS MANAGER

Bordenave Dominique

Chosson Christine

Berennes Christophe

Berouineau Cyril

Hascoet Serge

Huynh Eric

Lord Didier

Mendroux Guenaele

LOCAL STUDIOS MANAGERS

Antona Jerome

Baduel Alexandre

Boukheifia Ahmed

Brunet Sylvain

Maigret Sandrine

Monteil Gilles

SITES MANAGERS

** Anncy* : Patix Daniel

** Montpellier* : Ancel

Michel

** Montreuil* : Burgess

Christine

PRODUCTION

Ubi Production

Guillemot Gerard

PUBLISHING

Ubi Soft

Guillemot Yves

DEVELOPMENT

Ubi Studios

Guillemot Michel

SPECIAL THANKS TO

The Former Management

Team

Gobbi Gregoire

Paccard Nathalie

VERY SPECIAL THANKS TO

Patix Daniel

Popolopy

USA MARKETING

David Bamberger

Mona Hamilton

Libby Brown

USA PACKAGING

Axiom Design

Mari Sakai

USA PUBLIC RELATIONS

Sandra Yee

Melanie Melton

SPECIAL THANKS TO

Laurent Detoc

Swirl

Wendy Robinson

Carrie Tice

Lisa Hootnick

Melissa Wilks



BLAST VISOR & HELMET

Protective gear for high-speed and hazards — explosions, lava, rock-slides, high voltage attacks and more.

CPU

1.3 Ghz positronic chipset. Problem solves on the fly. Even designs & rides rollercoasters.

TRACTOR BEAM

Fully functional beam — grab, swing, toss, freeze and crush small and large objects. Even toss sheep. Precision target and hurt feature.

VISION SYSTEM

Hi-resolution 3D vision. Detects the finest details in full color. Perfect for painting, precision hurling and targeting.

POWER SUPPLY

On-board Frigid Fusion Reactor. No refueling or recharging necessary.

GYRO ORBS



balance. Superior grip
once in high, narrow,
even teezing places.

RUBBERENE WHEEL

A rugged go-anywhere
tire. Also looks funny
into rollercoaster carts,
robotic dolphins, paint-
ball chariots and more.

STRAUTS & ROCKETS

Titanium reinforced
struts with liquid
hydrogen booster
rockets. Can handle a
wide range of leaps,
jumps & landings.



IF YOU THINK HE IS FULLY LOADED WAIT UNTIL YOU SEE THE AMUSEMENT PARK.



Rocketeer is the most advanced amusement park robot ever made. He's ready for anything. Well, almost. Now all the lock-picks are stolen, the walrus is gone, a raccoon is dismantling everything, and the greatest park in the universe must open tomorrow! Fasten your seat belts. It's gonna be the ride of your life.



**Sticker
PUNCH!**

**Ubi Soft
ENTERTAINMENT**

NINTENDO 64



WWW.ROCKETROBOTONWHEELS.COM

ROCKET

of your life.

on wheels

© 1999 Ubi Soft Entertainment Inc. Rocketeer is a trademark of Ubi Soft Entertainment Inc. All rights reserved. Rocketeer is a trademark of Ubi Soft Entertainment Inc. All rights reserved. Rocketeer is a trademark of Ubi Soft Entertainment Inc. All rights reserved.

Toxic Trouble[®] 64



"...It's a Mess of Fun..."
- Nintendo Power



E
ESRB



Ubi Soft
...the art of possibility

TOXIC TROUBLE

©1999 Ubi Soft Entertainment, Inc. All Rights Reserved. Nintendo, Nintendo 64 and the 64 logo are trademarks of Nintendo of America Inc. ©1999 Nintendo of America Inc. All other trademarks are the property of their respective holders. www.toxictrouble.com

Help Ed right the wrongs in 12 wildly animated worlds -- insane puzzles, killer vegetables, dangerous dungeons, and more. All caused by Ed. It's the biggest trouble anyone's ever gotten into... or out of.

PROOF OF PURCHASE

Rayman[®] 2

0.08888.13007.9



WARRANTY AND SERVICE INFORMATION

Read this license agreement carefully before using this software product "RAYMAN® 2 THE GREAT ESCAPE". By using this product, you indicate your acceptance of the terms of the following agreement. These terms apply to you and any subsequent licensee of this product.

This copy of the Product is licensed to you for use under the following conditions:

A. Permitted Uses.

You may:

1. Permanently transfer the Product and its documentation to another user provided you retain no copies and the recipient agrees to the terms of this agreement.

B. Prohibited Uses.

You may not:

1. Transfer, distribute, rent, sub-license, or lease the Product or documentation, except as provided herein.
2. Alter, modify, or adapt the Product or documentation, or portions thereof including, but not limited to, translation, decompiling, disassembling, or creating derivative works.
3. Make copies of the documentation, the Product, or portions thereof.
4. Export the Product in violation of any United States export laws.

C. Limited Warranty by Ubi Soft, Inc.

Licensor warrants that the optical media on which the Product is distributed is free from defects in materials and workmanship. Licensor will replace defective media at no charge, provided you return the defective item with dated proof of payment to Licensor within ninety (90) days of the date of delivery. This is your sole and exclusive remedy for any breach of warranty, except as specifically provided herein and in the manual to this product. Ubi Soft Inc. makes no warranty or representation, either express or implied, with respect to the product, including its quality, performance, merchantability, or fitness for a particular purpose. In no event will Ubi Soft Inc. be liable for direct, indirect, special, incidental, or consequential damages arising out of the use or inability to use the product or documentation, even if advised of the possibility of such damages. In no case shall Ubi Soft Inc.'s liability exceed the amount of the license fee paid. The warranty and remedies set forth above are exclusive and in lieu of all others, oral or written, express or implied.

D. Warranty and Indemnification by You:

You warrant that you will abide by the terms and conditions set forth herein, and that you indemnify Ubi Soft Inc., its directors, officers, employees, agents and licensees for any costs, damages, or liabilities arising from any claims arising from any breach of the aforesaid warranty.

E. General:

Ubi Soft, Inc. retains all rights not expressly granted herein.

Nothing in this License Agreement constitutes a waiver of Ubi Soft Inc.'s rights under United States copyright or other law. This License is non-exclusive. This License and your right to use the Product automatically terminate without notice from Ubi Soft Inc. if you fail to Comply with any provision of this License Agreement or any terms and Conditions associated with the sale of this Product. Upon termination, you will destroy all documentation and disks. This Agreement is governed by the laws of the State of California.

Ubi Soft Entertainment, Inc.
625 Third Street, 3rd Floor - San Francisco, CA 94107
For information: 415-547-4000

NEED HINTS AND TIPS FOR RAYMAN 2?

HINT LINE
900-420-4UBI

**This service will provide you with exclusive tips
and game play secrets for Rayman 2.**

**CALL IS \$.95 PER MINUTE. YOU MUST BE 18 OR HAVE
PARENTAL PERMISSION TO USE THIS SERVICE.**



Ubi Soft Entertainment, Inc.
625 Third Street, 3rd Floor, San Francisco, CA 94107

PRINTED IN U.S.A.